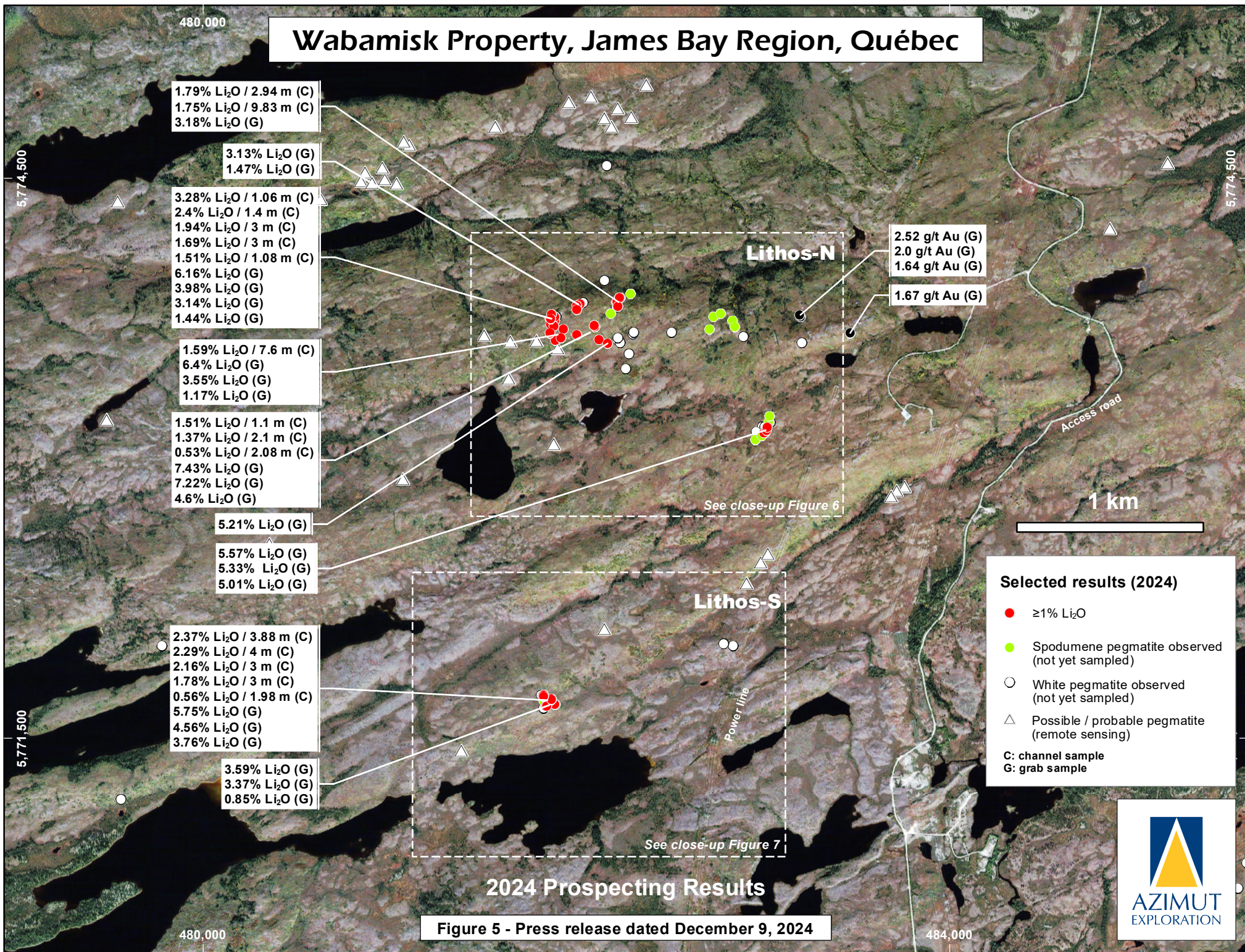


Wabamisk Property, James Bay Region, Québec



1.79% Li₂O / 2.94 m (C)
 1.75% Li₂O / 9.83 m (C)
 3.18% Li₂O (G)

3.13% Li₂O (G)
 1.47% Li₂O (G)

3.28% Li₂O / 1.06 m (C)
 2.4% Li₂O / 1.4 m (C)
 1.94% Li₂O / 3 m (C)
 1.69% Li₂O / 3 m (C)
 1.51% Li₂O / 1.08 m (C)
 6.16% Li₂O (G)
 3.98% Li₂O (G)
 3.14% Li₂O (G)
 1.44% Li₂O (G)

1.59% Li₂O / 7.6 m (C)
 6.4% Li₂O (G)
 3.55% Li₂O (G)
 1.17% Li₂O (G)

1.51% Li₂O / 1.1 m (C)
 1.37% Li₂O / 2.1 m (C)
 0.53% Li₂O / 2.08 m (C)
 7.43% Li₂O (G)
 7.22% Li₂O (G)
 4.6% Li₂O (G)

5.21% Li₂O (G)

5.57% Li₂O (G)
 5.33% Li₂O (G)
 5.01% Li₂O (G)

2.37% Li₂O / 3.88 m (C)
 2.29% Li₂O / 4 m (C)
 2.16% Li₂O / 3 m (C)
 1.78% Li₂O / 3 m (C)
 0.56% Li₂O / 1.98 m (C)
 5.75% Li₂O (G)
 4.56% Li₂O (G)
 3.76% Li₂O (G)

3.59% Li₂O (G)
 3.37% Li₂O (G)
 0.85% Li₂O (G)

Lithos-N

2.52 g/t Au (G)
 2.0 g/t Au (G)
 1.64 g/t Au (G)

1.67 g/t Au (G)

See close-up Figure 6

Lithos-S

See close-up Figure 7

Access road

Power line

1 km

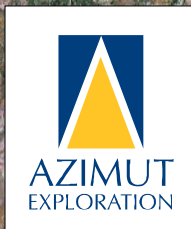
Selected results (2024)

- ≥1% Li₂O
- Spodumene pegmatite observed (not yet sampled)
- White pegmatite observed (not yet sampled)
- △ Possible / probable pegmatite (remote sensing)

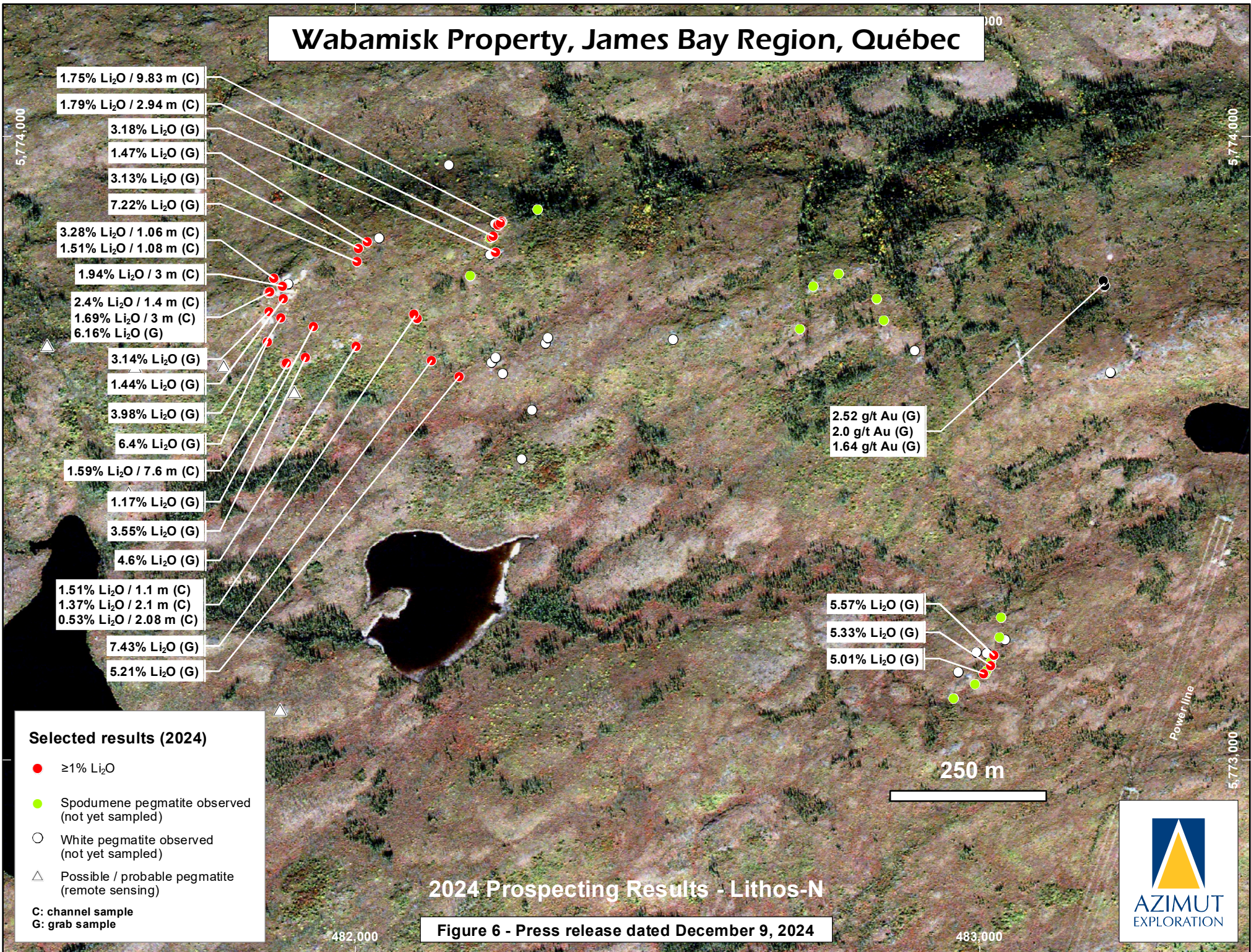
C: channel sample
 G: grab sample

2024 Prospecting Results

Figure 5 - Press release dated December 9, 2024



Wabamisk Property, James Bay Region, Québec



1.75% Li₂O / 9.83 m (C)

1.79% Li₂O / 2.94 m (C)

3.18% Li₂O (G)

1.47% Li₂O (G)

3.13% Li₂O (G)

7.22% Li₂O (G)

3.28% Li₂O / 1.06 m (C)

1.51% Li₂O / 1.08 m (C)

1.94% Li₂O / 3 m (C)

2.4% Li₂O / 1.4 m (C)

1.69% Li₂O / 3 m (C)

6.16% Li₂O (G)

3.14% Li₂O (G)

1.44% Li₂O (G)

3.98% Li₂O (G)

6.4% Li₂O (G)

1.59% Li₂O / 7.6 m (C)

1.17% Li₂O (G)

3.55% Li₂O (G)

4.6% Li₂O (G)

1.51% Li₂O / 1.1 m (C)

1.37% Li₂O / 2.1 m (C)

0.53% Li₂O / 2.08 m (C)

7.43% Li₂O (G)

5.21% Li₂O (G)

2.52 g/t Au (G)
2.0 g/t Au (G)
1.64 g/t Au (G)

5.57% Li₂O (G)

5.33% Li₂O (G)

5.01% Li₂O (G)

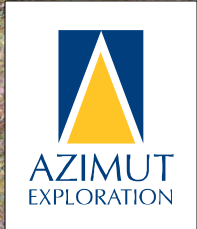
Selected results (2024)

- ≥1% Li₂O
- Spodumene pegmatite observed (not yet sampled)
- White pegmatite observed (not yet sampled)
- △ Possible / probable pegmatite (remote sensing)

C: channel sample
G: grab sample

2024 Prospecting Results - Lithos-N

Figure 6 - Press release dated December 9, 2024



Wabamisk Property, James Bay Region, Québec

1.78% Li₂O / 3 m (C)
4.56% Li₂O (G)

2.37% Li₂O / 3.88 m (C)
0.56% Li₂O / 1.98 m (C)
5.75% Li₂O (G)

2.16% Li₂O / 3 m (C)
3.37% Li₂O (G)

2.29% Li₂O / 4 m (C)
3.76% Li₂O (G)
3.59% Li₂O (G)
0.85% Li₂O (G)

250 m

Selected results (2024)

- ≥1% Li₂O
- Spodumene pegmatite observed (not yet sampled)
- White pegmatite observed (not yet sampled)
- △ Possible / probable pegmatite (remote sensing)

C: channel sample
G: grab sample

2024 Prospecting Results - Lithos-S

Figure 7 - Press release dated December 9, 2024

