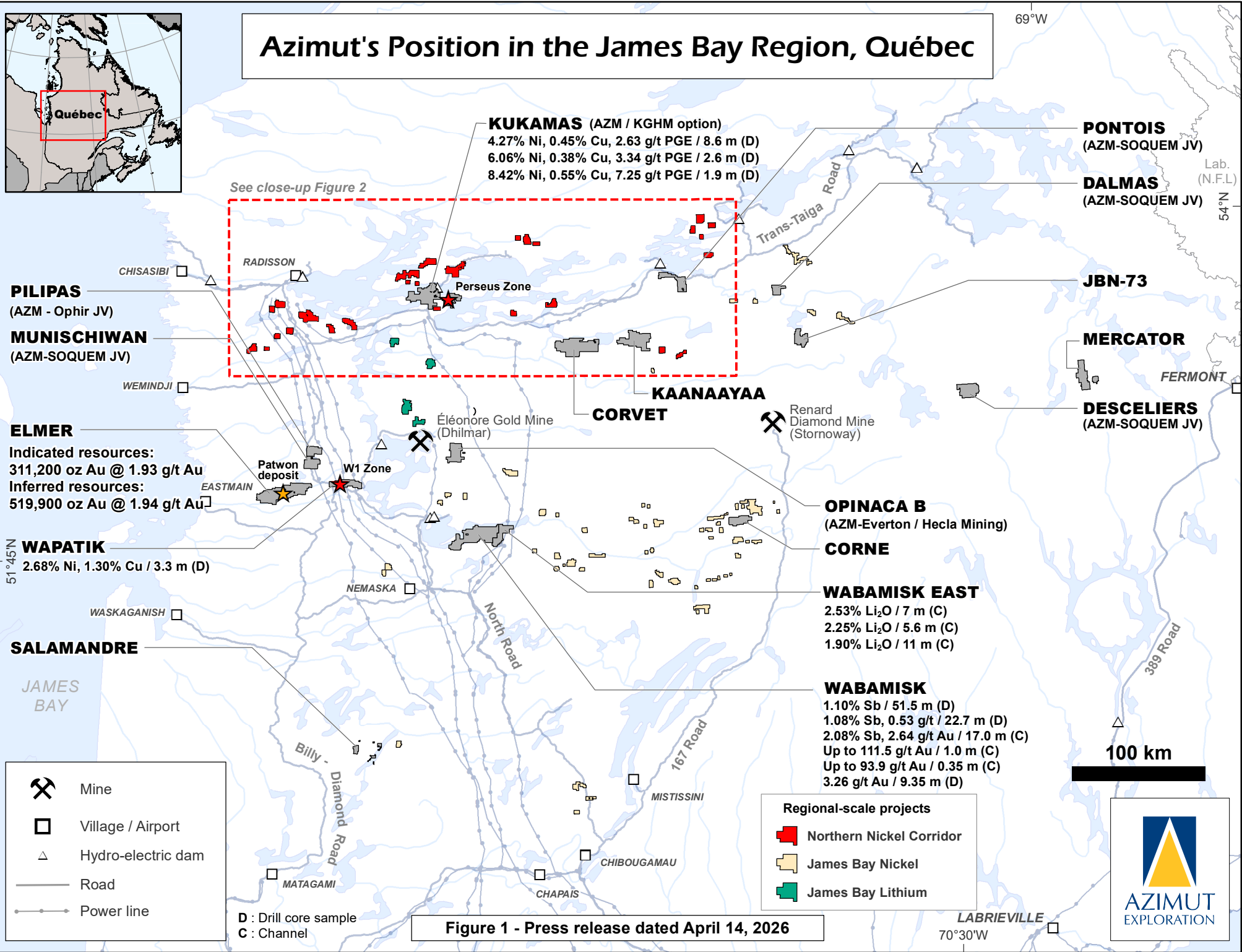
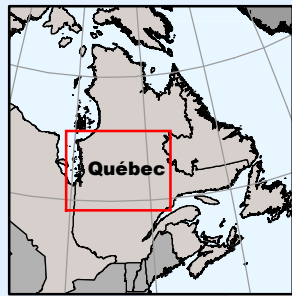


Azimut's Position in the James Bay Region, Québec



KUKAMAS (AZM / KGHM option)
 4.27% Ni, 0.45% Cu, 2.63 g/t PGE / 8.6 m (D)
 6.06% Ni, 0.38% Cu, 3.34 g/t PGE / 2.6 m (D)
 8.42% Ni, 0.55% Cu, 7.25 g/t PGE / 1.9 m (D)

PONTOIS
 (AZM-SOQUEM JV)

DALMAS
 (AZM-SOQUEM JV)

JBN-73

MERCATOR

DESCELIERS
 (AZM-SOQUEM JV)

PILIPAS
 (AZM - Ophir JV)

MUNISCHIWAN
 (AZM-SOQUEM JV)

ELMER
 Indicated resources:
 311,200 oz Au @ 1.93 g/t Au
 Inferred resources:
 519,900 oz Au @ 1.94 g/t Au

WAPATIK
 2.68% Ni, 1.30% Cu / 3.3 m (D)

SALAMANDRE

CORVET

OPINACA B
 (AZM-Everton / Hecla Mining)

CORNE

WABAMISK EAST
 2.53% Li₂O / 7 m (C)
 2.25% Li₂O / 5.6 m (C)
 1.90% Li₂O / 11 m (C)

WABAMISK
 1.10% Sb / 51.5 m (D)
 1.08% Sb, 0.53 g/t / 22.7 m (D)
 2.08% Sb, 2.64 g/t Au / 17.0 m (C)
 Up to 111.5 g/t Au / 1.0 m (C)
 Up to 93.9 g/t Au / 0.35 m (C)
 3.26 g/t Au / 9.35 m (D)

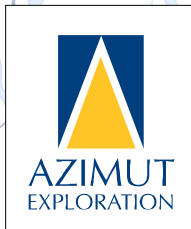
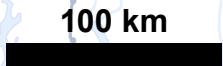
Regional-scale projects

- Northern Nickel Corridor
- James Bay Nickel
- James Bay Lithium

- Mine
- Village / Airport
- Hydro-electric dam
- Road
- Power line

D : Drill core sample
 C : Channel

Figure 1 - Press release dated April 14, 2026



70°30'W

69°W

Lab. (N.F.L.)
 54°N

51°45'N

Northern Nickel Corridor Project in the James Bay Region, Québec

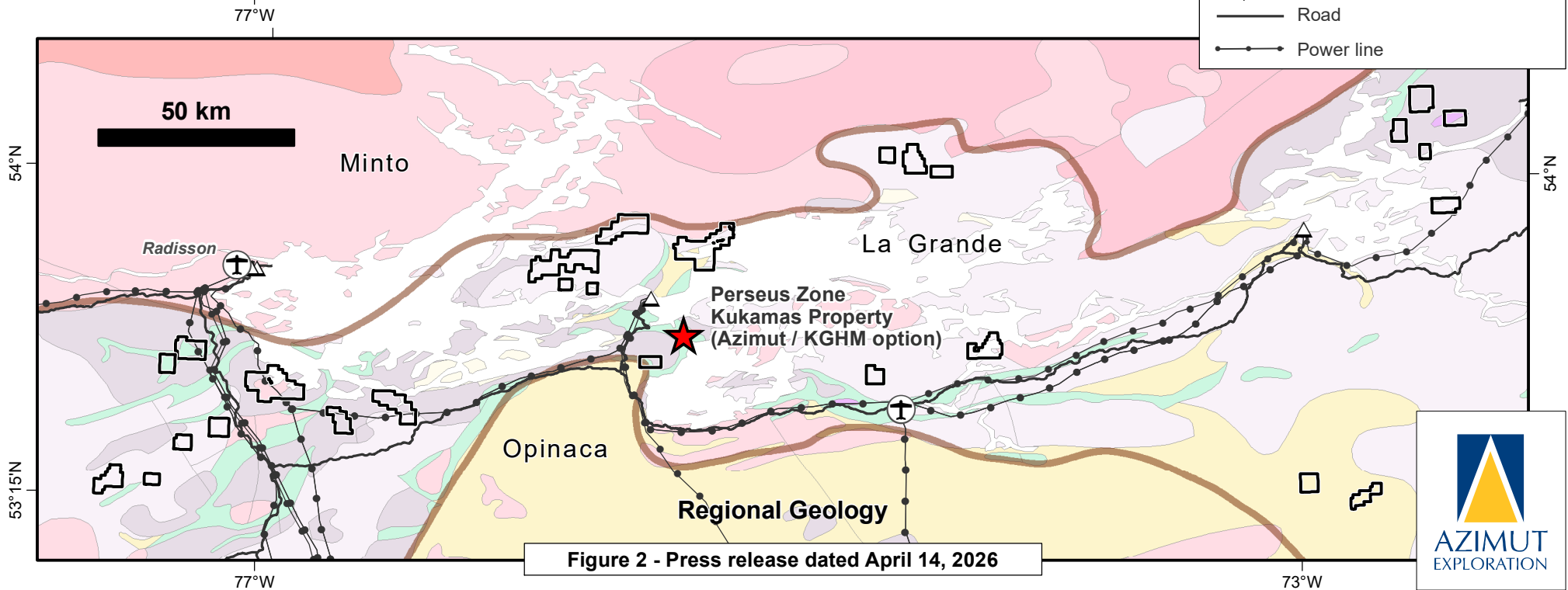
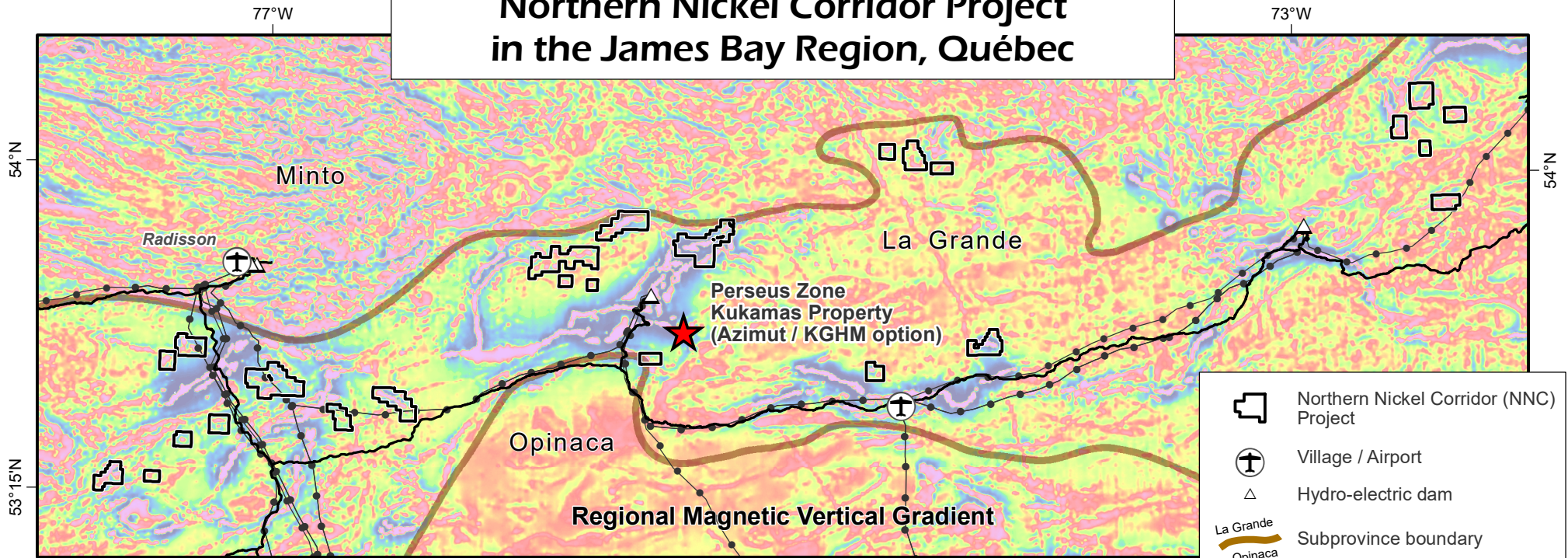


Figure 2 - Press release dated April 14, 2026

