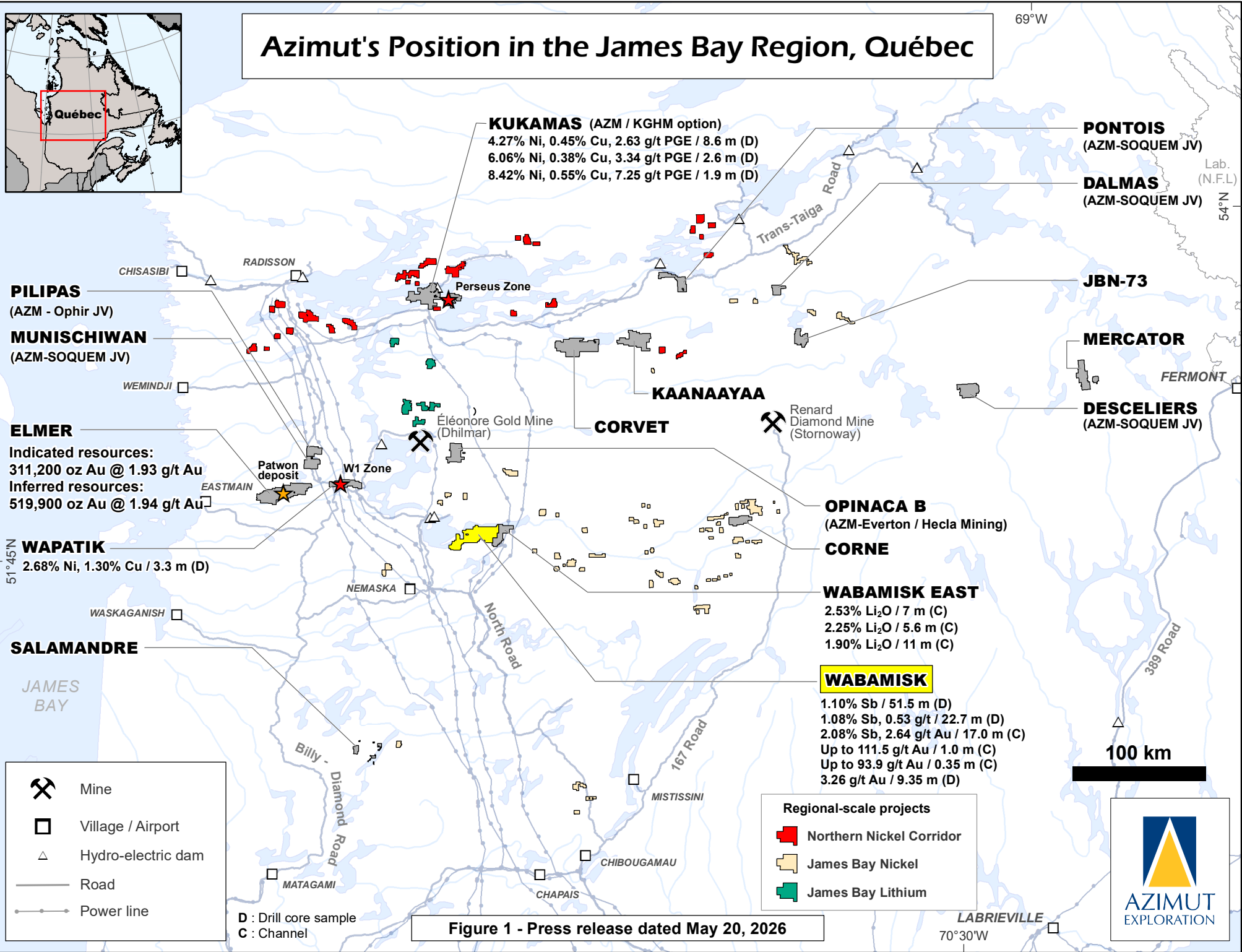
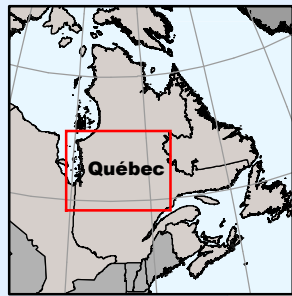


# Azimut's Position in the James Bay Region, Québec



**KUKAMAS** (AZM / KGHM option)  
 4.27% Ni, 0.45% Cu, 2.63 g/t PGE / 8.6 m (D)  
 6.06% Ni, 0.38% Cu, 3.34 g/t PGE / 2.6 m (D)  
 8.42% Ni, 0.55% Cu, 7.25 g/t PGE / 1.9 m (D)

**PONTOIS**  
 (AZM-SOQUEM JV)

**DALMAS**  
 (AZM-SOQUEM JV)

**JBN-73**

**MERCATOR**

**DESCELIERS**  
 (AZM-SOQUEM JV)

**PILIPAS**  
 (AZM - Ophir JV)

**MUNISCHIWAN**  
 (AZM-SOQUEM JV)

**ELMER**  
 Indicated resources:  
 311,200 oz Au @ 1.93 g/t Au  
 Inferred resources:  
 519,900 oz Au @ 1.94 g/t Au

**WAPATIK**  
 2.68% Ni, 1.30% Cu / 3.3 m (D)

**SALAMANDRE**

**KAANAAYAA**

**CORVET**

**OPINACA B**  
 (AZM-Everton / Hecla Mining)

**CORNE**

**WABAMISK EAST**  
 2.53% Li<sub>2</sub>O / 7 m (C)  
 2.25% Li<sub>2</sub>O / 5.6 m (C)  
 1.90% Li<sub>2</sub>O / 11 m (C)

**WABAMISK**  
 1.10% Sb / 51.5 m (D)  
 1.08% Sb, 0.53 g/t / 22.7 m (D)  
 2.08% Sb, 2.64 g/t Au / 17.0 m (C)  
 Up to 111.5 g/t Au / 1.0 m (C)  
 Up to 93.9 g/t Au / 0.35 m (C)  
 3.26 g/t Au / 9.35 m (D)

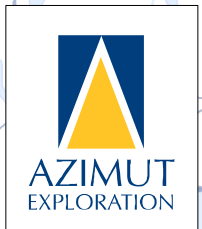
- Mine
- Village / Airport
- Hydro-electric dam
- Road
- Power line

D : Drill core sample  
 C : Channel

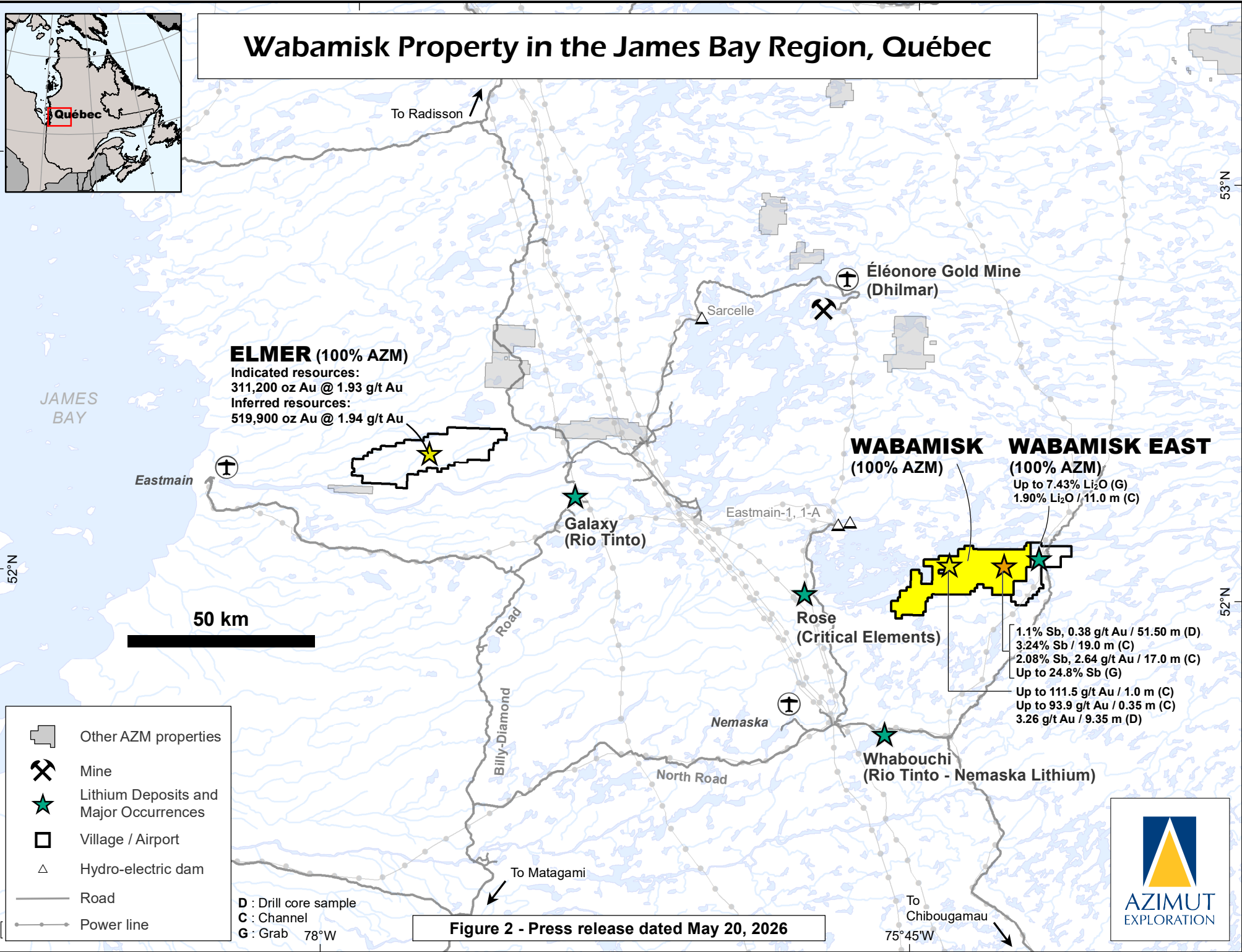
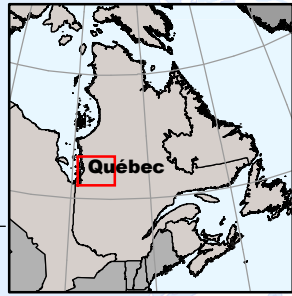
- Regional-scale projects**
- Northern Nickel Corridor
  - James Bay Nickel
  - James Bay Lithium

100 km

Figure 1 - Press release dated May 20, 2026



# Wabamisk Property in the James Bay Region, Québec



**ELMER (100% AZM)**  
 Indicated resources:  
 311,200 oz Au @ 1.93 g/t Au  
 Inferred resources:  
 519,900 oz Au @ 1.94 g/t Au

**WABAMISK (100% AZM)**  
**WABAMISK EAST (100% AZM)**  
 Up to 7.43% Li<sub>2</sub>O (G)  
 1.90% Li<sub>2</sub>O / 11.0 m (C)

1.1% Sb, 0.38 g/t Au / 51.50 m (D)  
 3.24% Sb / 19.0 m (C)  
 2.08% Sb, 2.64 g/t Au / 17.0 m (C)  
 Up to 24.8% Sb (G)  
 Up to 111.5 g/t Au / 1.0 m (C)  
 Up to 93.9 g/t Au / 0.35 m (C)  
 3.26 g/t Au / 9.35 m (D)

- Other AZM properties
- Mine
- Lithium Deposits and Major Occurrences
- Village / Airport
- Hydro-electric dam
- Road
- Power line

D : Drill core sample  
 C : Channel  
 G : Grab

**Figure 2 - Press release dated May 20, 2026**

