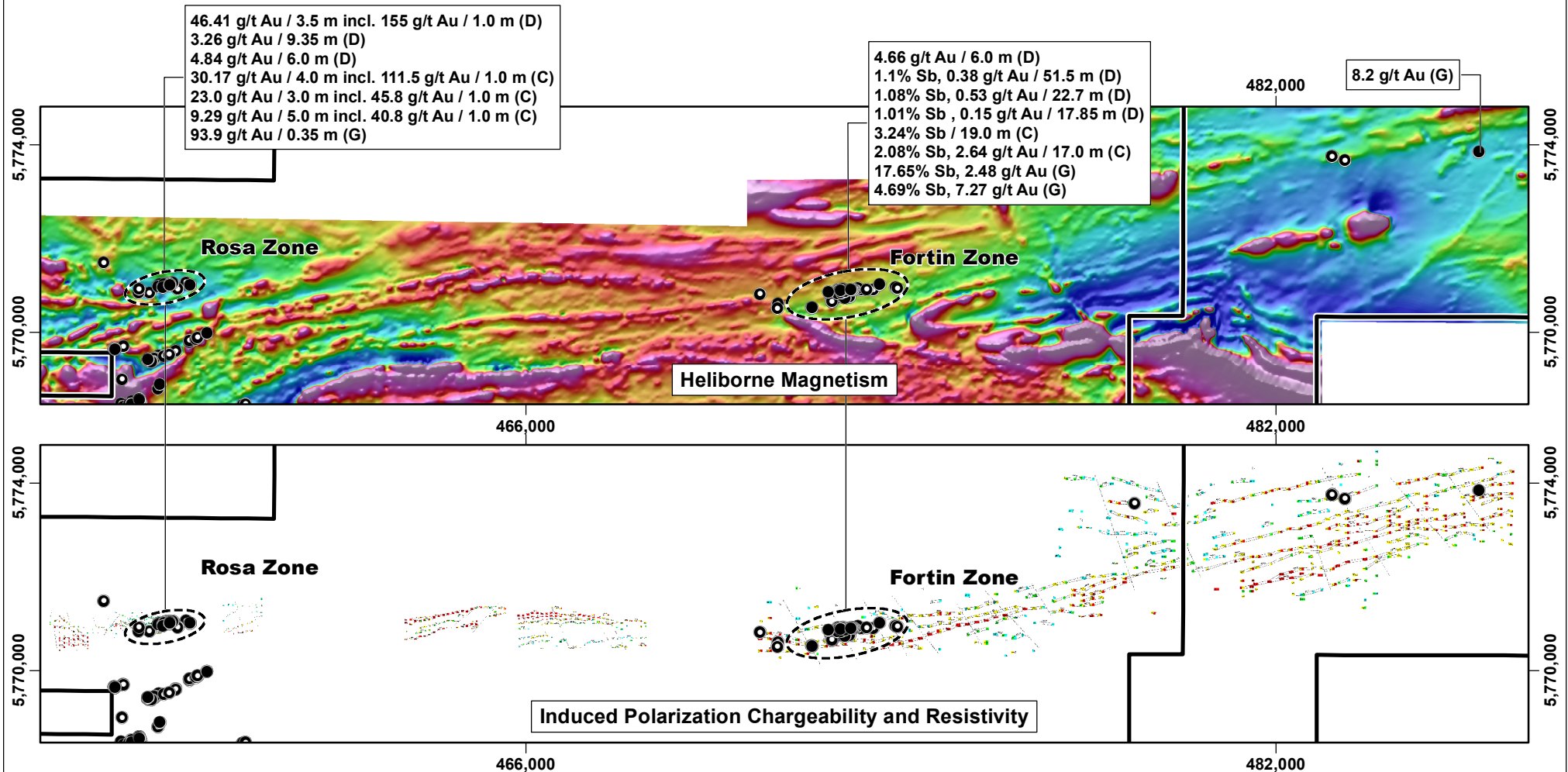


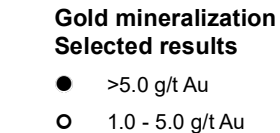
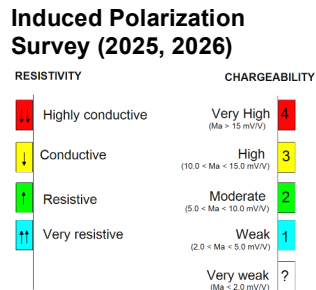
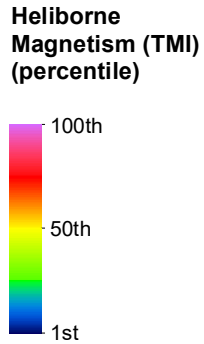
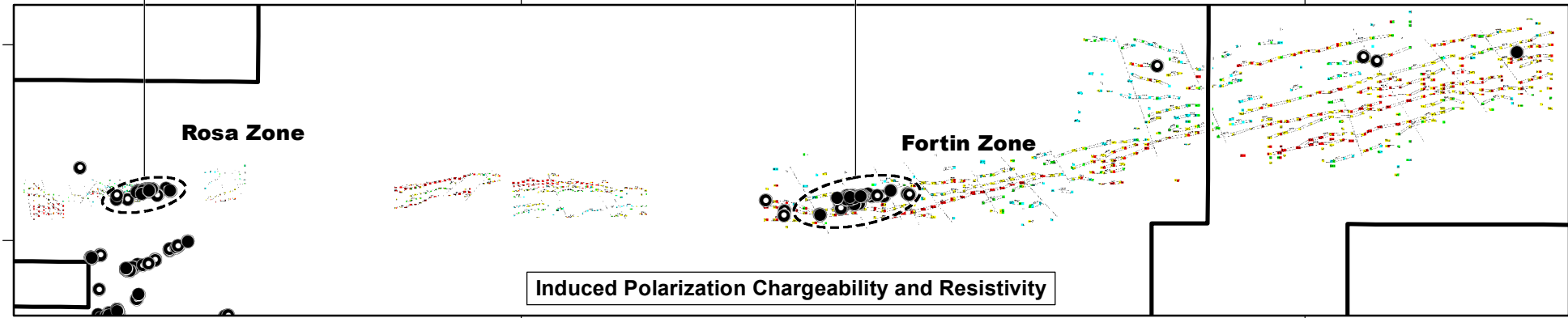
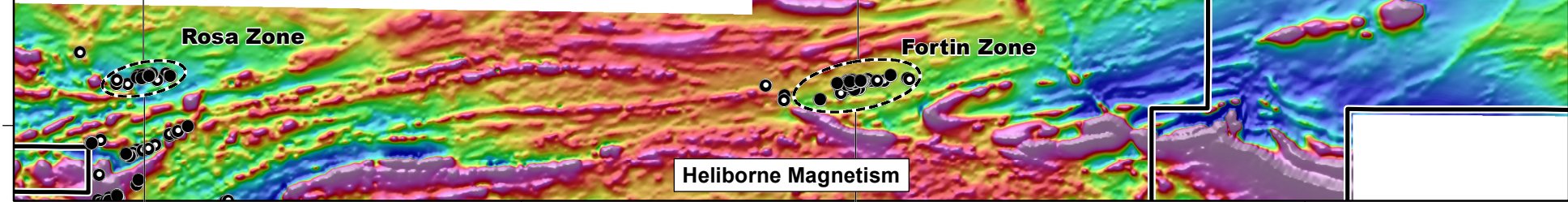
Wabamisk Property, James Bay Region, Québec



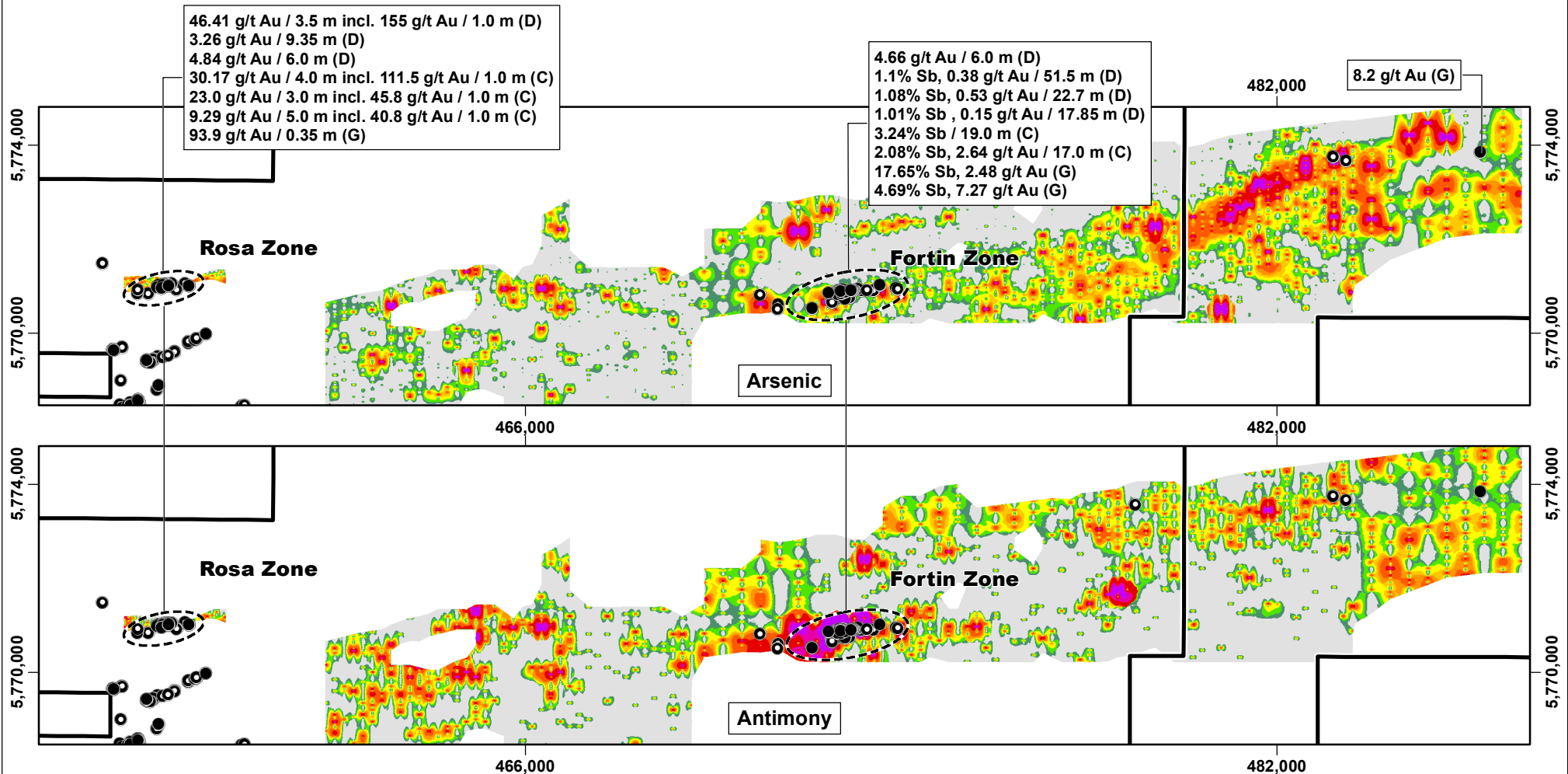
46.41 g/t Au / 3.5 m incl. 155 g/t Au / 1.0 m (D)
 3.26 g/t Au / 9.35 m (D)
 4.84 g/t Au / 6.0 m (D)
 30.17 g/t Au / 4.0 m incl. 111.5 g/t Au / 1.0 m (C)
 23.0 g/t Au / 3.0 m incl. 45.8 g/t Au / 1.0 m (C)
 9.29 g/t Au / 5.0 m incl. 40.8 g/t Au / 1.0 m (C)
 93.9 g/t Au / 0.35 m (G)

4.66 g/t Au / 6.0 m (D)
 1.1% Sb, 0.38 g/t Au / 51.5 m (D)
 1.01% Sb, 0.15 g/t Au / 17.85 m (D)
 3.24% Sb / 19.0 m (C)
 2.08% Sb, 2.64 g/t Au / 17.0 m (C)
 17.65% Sb, 2.48 g/t Au (G)
 4.69% Sb, 7.27 g/t Au (G)

8.2 g/t Au (G)



Wabamisk Property, James Bay Region, Québec



Interpolated Soil Geochemistry (percentile)

- 100%
- 99%
- 96% - 98%
- 91% - 95%
- 86% - 90%
- 81% - 85%
- 71% - 80%
- 61% - 70%
- 51% - 60%
- 1% - 50%

Gold mineralization Selected results

- >5.0 g/t Au
- 1.0 - 5.0 g/t Au

3 km

Footprint of a District-Scale Exploration Play Geochemistry

Figure 9 - Press release dated May 26, 2026

